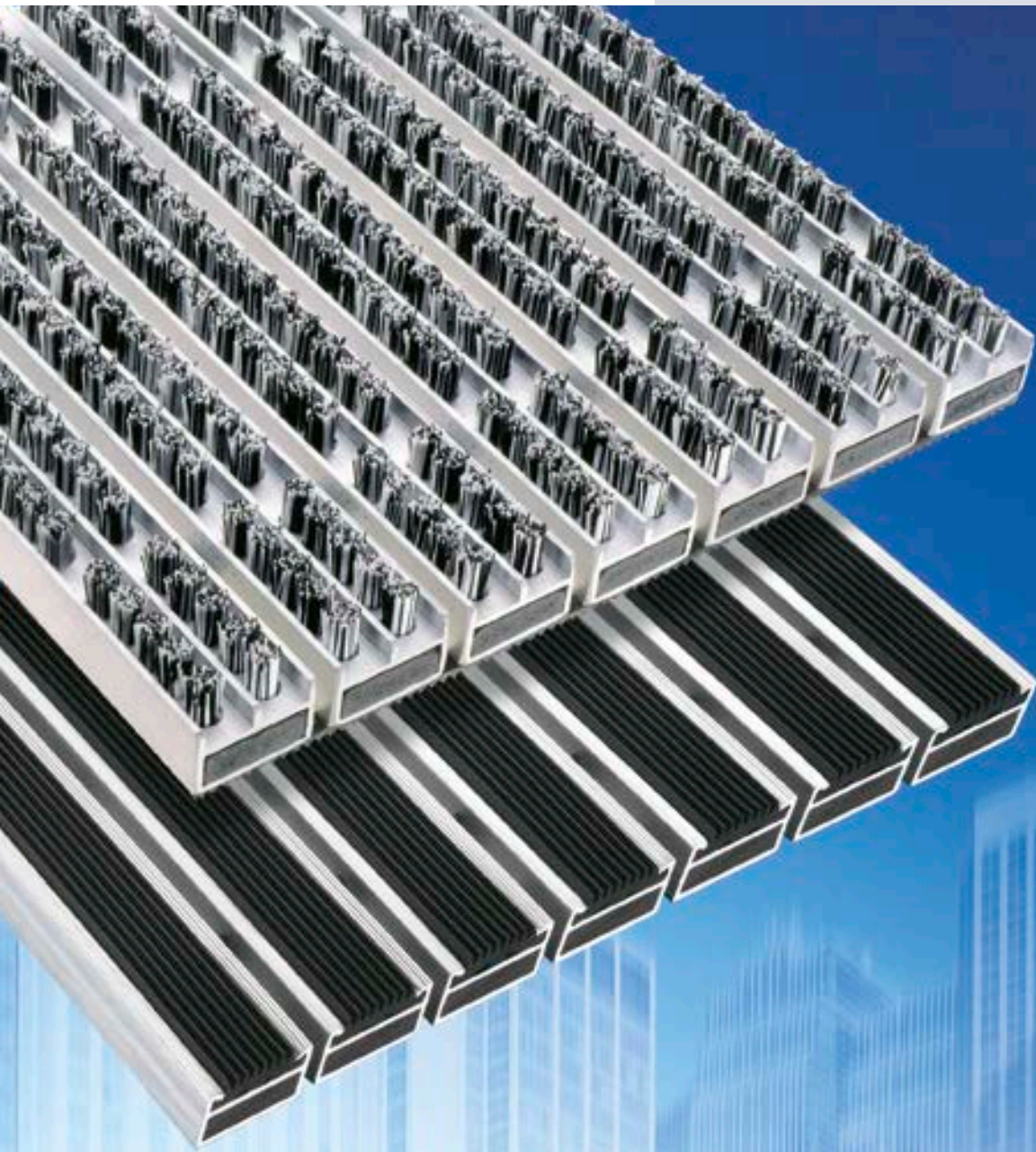


HAGO

Your best decision: our quality



www.hago.at

HAGOMAT

ENTRANCE MATTING





The entrance area is now recognized by many architects and builders as the showpiece of the building.

You can set design accents with the modern, high quality entrance mats from HAGO.

Moreover, functional entrance matting also drastically reduces cleaning costs, which places less strain on floors and thus increases their service life.



The perfect HAGO functional principle:



Cleaning action through walking motion

Simply roll it up ...

... and vacuum the dirt away

**Sturdy, durable interlocking system**

We use particularly rigid (3/5mm) plastic-coated metal cables as the interlocking system for our 17 mm and 24 mm high aluminium profile mats.

This ensures their dimensional stability, even after frequent rolling action, and a very long service life.

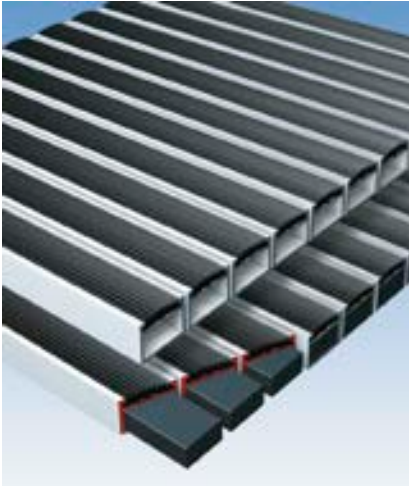
**High quality brushes**

All the bristles of our HAGO brush mats are made from 6.6 polyamide.

Highest abrasion resistance and re-righting ability is guaranteed. Optimal function of the bristles is thereby ensured for many years to come.

**Impact (footfall) sound dampening**

Rubber strips on the underside of our aluminium profile mats are noise-insulated, non-slip and facilitate water drainage.



Reinforced versions for extreme wear are available.

Many of our aluminium profile mats are available in a reinforced version for extreme wear. *(see illustration below)*

The aluminium hollow-chamber profile is then completely filled with a pressure-resistant hard plastic core. This increases the stability of the entrance mat even more.

Our premium **Hagomat Exklusiv** mats are already delivered in a reinforced version as standard.



Fire resistant

A majority of our entrance mats have been tested to assess their reaction to fire and classified as Bfl-s1 or Cfl-s1 by renowned institutes according to EN 11925-2 and EN 9239-1.

Both classifications (*Bfl-s1 and Cfl-s1*) correspond to the former, Austrian (*ÖNORM*) B1 flammability class and Q1 smoke emission class (*flame retardant, low smoke emission*).

The exact classifications can be found in the following product descriptions.

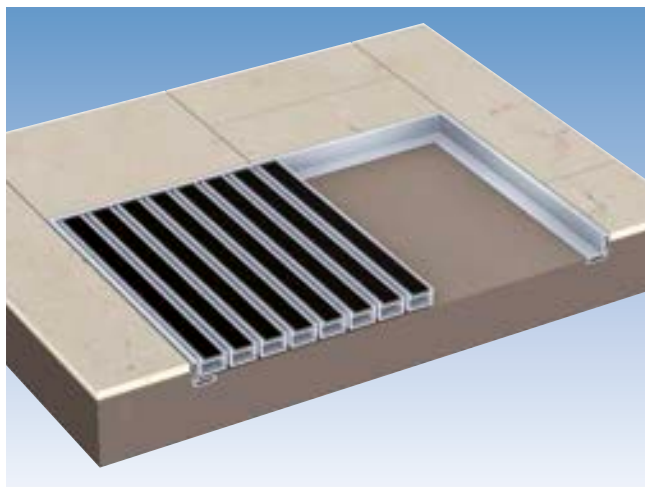


They are made to measure without compensating strips

Hagomat entrance mats are made to measure according to your requirements.

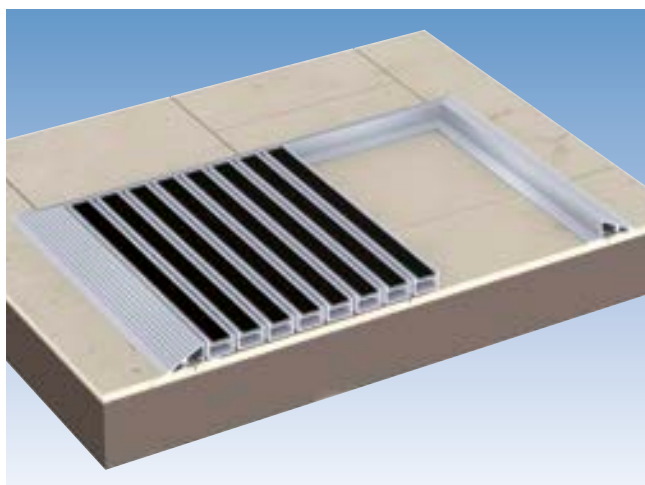
Our linkage system allows a precise fit in profile length and walking depth. *(pictured below)*

As a rule, Hago refrains from using unattractive compensation strips (*end profiles*). *(pictured above)*



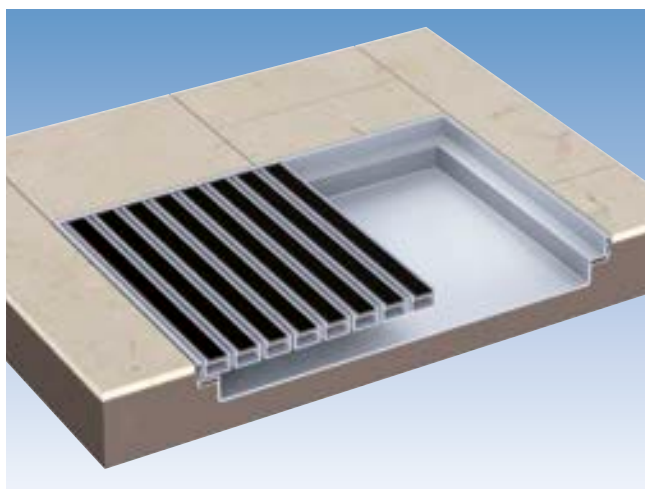
Aluminium frames Stainless steel frames

Sturdy frame for flush installation.



Aluminium ramp frame

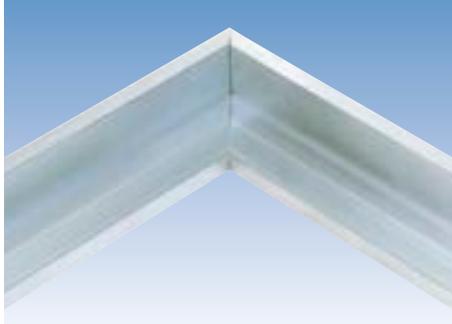
For subsequent installation on
your floor covering.



Aluminium dirt collection well

How practical – any dirt simply
falls into the well.

Can only be used with
24 mm aluminium profile mats.



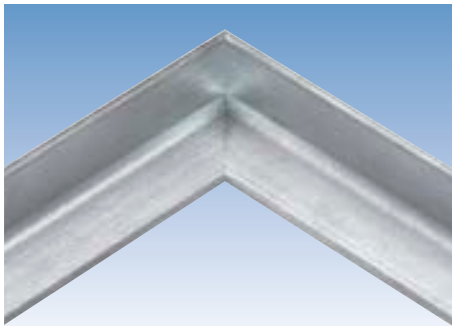
Aluminium frame Part no. 18 000

Sturdy aluminium frame with single-sided pressed corner connections. Special sizes are delivered disassembled. For standard sizes, see the price list for details. Any size and shape is possible. 7 mm visible width.

The installation height is 7 mm greater than the inside height.

Type	Inside height
Frame A	23 mm
Frame B	20 mm

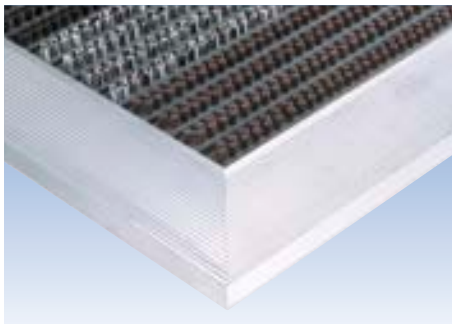
Type	Inside height
Frame C	17 mm
Frame D	12 mm



Stainless steel frame Part no. 18 400

Superior grade stainless steel frame. Screwed corner connections. 3 mm visible width. **The installation height is 3 mm greater than the inside height.**

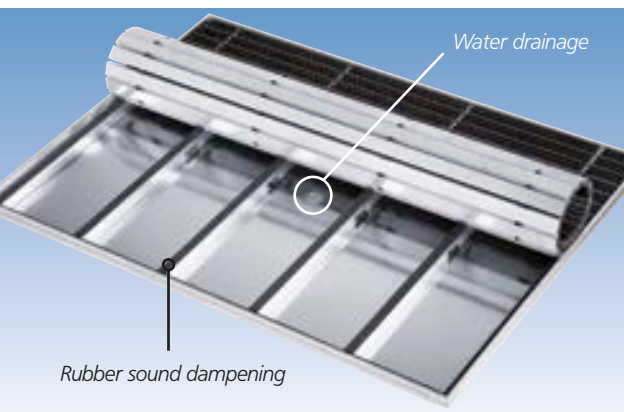
Type	Inside height
Frame A	22 mm
Frame B	17 mm



Aluminium ramp frame Part no. 19 100

For subsequent mat installation whenever a flush-mounted angle frame can no longer be installed.

Type	Inside height
Profile A	22 mm
Profile B	18 mm
Profile C	11 mm



Aluminium dirt collection well Part no. 19 300

Dirt collection well with aluminium frame (23 mm inside frame height). 57 mm total installation height. 45 mm diameter of water drainage hole.

Standard sizes: Overall dimensions in cm: 61 × 41 and 81 × 51. Especially suitable for the **Exklusiv, Mondial, Combiclean, Combiclean Brush, Combistrip** and **Combistrip Brush** mats in the 59 × 39 cm and 79 × 49 cm standard sizes.

Special sizes are available.

The well is only compatible with 24 mm aluminium profile mats.



**Representative entrance areas with high customer frequency.
Extremely long service life.
5 year performance guarantee!**

Materials:

Aluminium profile with 3 dirt scraper bars. hard plastic core. superior grade 6.6 polyamide bristles.

Versions:

- 5 mm or 10 mm profile spacing
- With snow scraper bar

Colours:

As shown on the left.

Features:

Weatherproof (for indoor and outdoor use). Superior dirt collection capacity. Very effective from especially long bristles and non-slip from rubber strips on the underside.

Reaction to fire: Classified according to EN 11925-2 and EN-9239-1: Bfl-s1 (equivalent to B1, Q1 from the previous ÖNORM)

Dimensions:

- Mat height: 24 mm
- Profile spacing: Approx. 5 mm or 10 mm
- Profile length: Max. 2.00 m – longer mats are made in two or more parts.

Large mats must also be made in two or more parts in their walking depth. If the mat is to be self-supporting, then a crossbar must be laid every 30 cm.

Standard sizes (finished mat sizes):

- 49×34 cm, 59×39 cm
- 79×49 cm, 99×59 cm
- (10 mm profile spacing) Standard colours light grey, brown and black.

Shapes: Any mat shape is possible!



Weight: Approx. 19 kg/m²

Cleaning:

Simply vacuum the surface and the underlying surface (ideally daily). For extreme dirt, hose off with pressurised water (e. g. high pressure water jet cleaner).

Warranty:

5 year performance guarantee. (written guarantee on page 34 of this brochure)

Tender specification:

HAGOMAT Exklusiv 24, Part no. , reinforced profile with solid plastic core, with 3 dirt scraper bars and 2 rows of bristles per bar made from polyamide 6.6 fibres. Colour of the bristles. Made to measure without compensating end profiles. Reaction to fire: Bfl-s1. Delivery and installation.

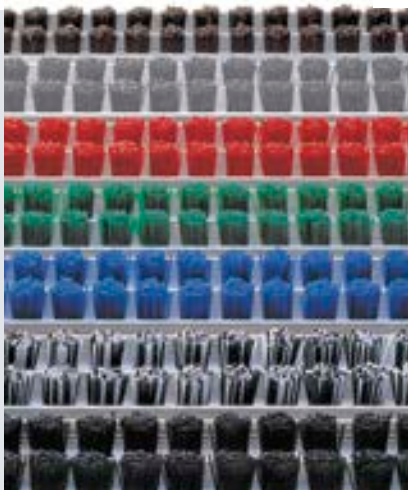


HAGOMAT Exklusiv 24
light grey

HAGOMAT Exklusiv 24
black with snow scraper bar

HAGOMAT Exklusiv 24
platin

Available colours:



- 12 brown
- 19 platin
- 14 red
- 13 green
- 15 blue
- 11 light grey
- 17 black

Part no.	Product description	Approx. mat height	Compatible angle frame inside height (see page 7)
10 100	HAGOMAT Exklusiv 24 5 mm profile spacing	24 mm	23 mm
10 110	HAGOMAT Exklusiv 24 10 mm profile spacing	24 mm	23 mm
10 102	HAGOMAT Exklusiv 24 with snow scraper bar	24 mm	23 mm

Hagomat Exklusiv is already delivered with a reinforced profile (with solid plastic core) as standard.



Entrances of office buildings, shops, hotels, schools, residential complexes, etc.

Materials:

Solid aluminium profile with integrated hard plastic bar filled with 3 rows of bristles made from polyamide 6.6 fibres.

Versions:

- **3 heights: 12 mm, 17 mm and 24 mm nominal height***
- **Profile spacing: 5 mm or 10 mm**
(Mondial 12: only 5 mm profile spacing)
- **Reinforced version available with solid hard plastic core upon request**
(available only for Mondial 24 and Mondial 17)

Colours:

As shown on the left.

Features:

Weatherproof (for indoor and outdoor use).
Highly effective from brushing action.
Accurate to size, rollable and easy to clean.
Sound dampened and non-slip from rubber strips on the underside.

Reaction to fire: Classified according to EN 11925-2 and EN-9239-1: Bfl-s1 (equivalent to B1, Q1 from the previous ÖNORM)

Dimensions:

Mat height: 12 mm, 17 mm and 24 mm nominal height*

Profile spacing: Approx. 5 mm or 10 mm
(Mondial 12: only 5 mm profile spacing)

Profile length: Max. 2.00 m – longer mats are made in two or more parts.

Large mats must also be made in two or more parts in their walking depth. If the mat is to be self-supporting, then a crossbar must be laid every 30 cm.

Shapes: Any mat shape is possible!



Weight:

Approx. 12.5 kg/m² for 12 mm height

Approx. 15.5 kg/m² for 17 mm height

Approx. 17.0 kg/m² for 24 mm height

Cleaning:

Simply vacuum the surface and the underlying surface.
For extreme dirt, hose off with pressurised water (e.g. high pressure water jet cleaner).

Tender specification:

HAGOMAT Mondial. . . . , Part no. with 3 rows of bristles made from 6.6 polyamide fibres, mat height Colour
Made to measure without compensating end profiles.
Reaction to fire: Bfl-s1. Deliver and install.

*) Due to its design, the bristles protrude slightly above the nominal height.



HAGOMAT Mondial 24

HAGOMAT Mondial 17

HAGOMAT Mondial 12

Available colours:



17 black

05 grey

Part no.	Product description	Approx. mat height	Compatible angle frame inside height (see page 7)
11 400	Hagomat Mondial 12 5 mm profile spacing	12 mm	12 mm
11 417	Hagomat Mondial 17 5 mm profile spacing	17 mm	17 mm
11 427	Hagomat Mondial 17 10 mm profile spacing	17 mm	17 mm
11 424	Hagomat Mondial 24 5 mm profile spacing	24 mm	23 mm
11 434	Hagomat Mondial 24 10 mm profile spacing	24 mm	23 mm

Mondial 17 and Mondial 24 are also available in a **reinforced version**. (see also page 5 and the price list).



Modern entrances, such as office buildings, residential complexes, shop entrances, etc.

Materials:
Plastic profile with bristles made from high quality 6.6 polyamide fibres.

Versions:
► With snow scraper bar

Colours:
As shown on the left.

Features:
Weatherproof.
Highly effective from brushing action.
The mat must lie flush with the surface.

Reaction to fire: Classified according to EN 11925-2 and EN-9239-1: Cfl-s1 (equivalent to B1, Q1 according to the previous ÖNORM)

Dimensions:
Mat height: 24 mm
Profile spacing: Approx. 5 mm (10 mm for standard sizes)
Profile length: Max. 2.00 m – longer mats are made in two or more parts.

Large mats must also be made in two or more parts in their walking depth.

Standard sizes (finished sizes of mats):
59 × 39 cm, 79 × 49 cm
(10 mm profile spacing) Standard colours light grey, brown and black.

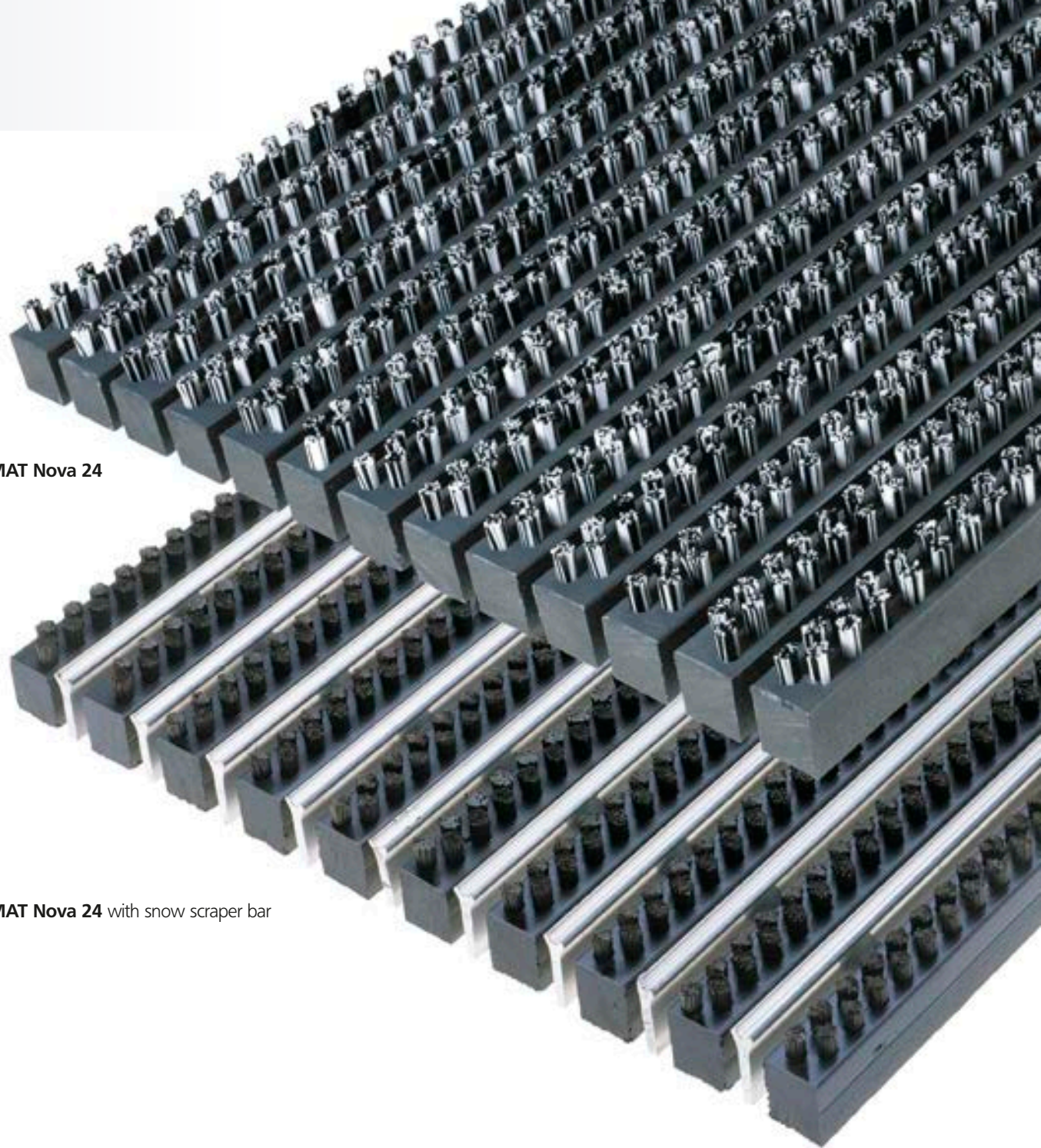
Shapes:
Only square and rectangular shapes are available.



Weight:
Approx. 16 kg/m²

Cleaning:
Simply vacuum the surface and the underlying surface (ideally daily). For extreme dirt, hose off with pressurised water (e. g. high pressure water jet cleaner).

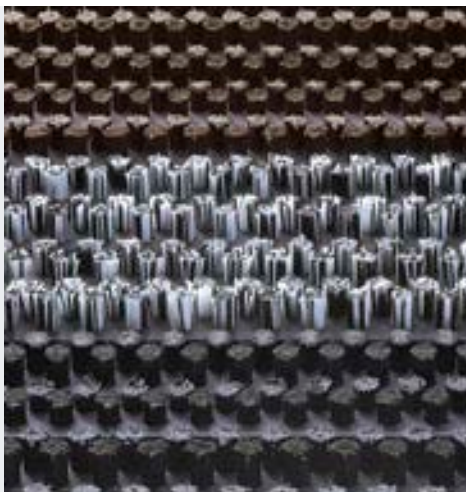
Tender specification:
HAGOMAT Nova 24, Part no. with 2 rows of bristles made from 6.6 polyamide fibres. Colour of the bristles.
Made to measure without compensating end profiles.
Reaction to fire: Cfl-s1. Delivery and installation.



HAGOMAT Nova 24

HAGOMAT Nova 24 with snow scraper bar

Available colours:



12 brown

11 light grey

17 black

Part no.	Product description	Approx. mat height	Compatible angle frame inside height (see page 7)
11 000	Hagomat Nova 24 5 mm profile spacing	24 mm	23 mm
11 002	Hagomat Nova 24 with snow scraper bar	24 mm	23 mm



Entrances with a homely atmosphere, such as kindergartens, retirement homes, offices, residential complexes, etc.

Materials:

Aluminium profile with grooved side bars.
durable coarse-fibre cord strips.

Versions:

- 5 mm or 10 mm profile spacing
- With snow scraper bar
- Reinforced version with solid hard plastic core available upon request

Colours:

As shown on the left.

Features:

Only install indoors or in an area protected from the elements
Ideally suited as a fine cleaner. High drying effect.
Sound dampened and non-slip from rubber strips on the underside.
The mat must lie flush with the surface.

Reaction to fire: Classified according to EN 11925-2 and EN-9239-1: Cfl-s1 (equivalent to B1, Q1 from the previous ÖNORM)

Dimensions:

Mat height: 24 mm, 17 mm or 10 mm
Profile spacing: Approx. 5 mm or 10 mm
Profile length: Max. 2.00 m – longer mats are made in two or more parts.

Large mats must also be made in two or more parts in their walking depth. If the mat is to be self-supporting, then a crossbar must be laid every 30 cm.

Standard sizes (finished mat sizes):

59 × 39 cm, 79 × 49 cm
(10 mm profile spacing)
Standard colours light grey, brown, anthracite.

Shapes:

Any mat shape is possible!



Weight:

Approx. 15 kg/m² for 24 mm height
Approx. 14 kg/m² for 17 mm height
Approx. 12 kg/m² for 10 mm height

Cleaning:

Simply vacuum the surface and the underlying surface (ideally daily). For tough dirt, brush out with a coarse brush and then vacuum.

Tender specification:

HAGOMAT Combiclean, Part no.
with grooved side bars.
Colour of coarse-fibre ribs. Mat height:
Made to measure without compensating end profiles.
Reaction to fire: Cfl-s1. Delivery and installation.

Part no.	Product description	Approx. mat height	Compatible angle frame inside height (see page 7)
11 200	Hagomat Combiclean 24 5 mm profile spacing	24 mm	23 mm
11 210	Hagomat Combiclean 24 10 mm profile spacing	24 mm	23 mm
11 202	Hagomat Combiclean 24 with snow scraper bar	24 mm	23 mm
11 255	Hagomat Combiclean 17 5 mm profile spacing	17 mm	17 mm
11 250	Hagomat Combiclean 17 10 mm profile spacing	17 mm	17 mm
11 257	Hagomat Combiclean 10 5 mm profile spacing	10 mm	12 mm

Combiclean 24 and Combiclean 17 are also available in a **reinforced version**.
(see also page 5 and the price list).



HAGOMAT Combiclean 24
with coarse-fibre rib strips

HAGOMAT Combiclean 24
with snow scraper bar

HAGOMAT Combiclean 17
with coarse-fibre rib strips

HAGOMAT Combiclean 10
with coarse-fibre rib strips

Available colours:



12 brown

04 blue

13 green

05 light grey

01 anthracite



Entrances with a homely atmosphere. Increased scraping effect from additional brushing action.

Materials:

Aluminium profile with grooved side bars.
Durable coarse-fibre cord strips.
Superior grade 6.6 polyamide bristle strips.

Versions:

► **4 different brush strips to choose from (depending on the expected amount of dirt)**

Colours can be combined from:

Coarse-fibre rib strips and optionally

- Exklusiv bristle strip
 - Mondial bristle strip
 - Nova bristle strip
 - narrow bristle strip
- (as shown on the left).

Features:

Only install indoors or in an area protected from the elements. Ideally suited as a fine and coarse cleaner. Good drying effect. Sound dampened and non-slip from rubber strips on the underside. The mat must lie flush with the surface.

Reaction to fire: Classified according to EN 11925-2 and EN-9239-1: Cfl-s1 (equivalent to B1, Q1 from the previous ÖNORM)

Dimensions:

Mat height: 24 mm
(with 24 mm, 17 mm or 12 mm Mondial bristle strip)
Profile spacing: Approx. 5 mm
Profile length: Max. 2.00 m – longer mats are made in two more parts.

Large mats must also be made in two or more parts in their walking depth as well.

Standard sizes (finished mat sizes) with narrow bristle strip:

59 × 39 cm, 79 × 49 cm

Shapes:

Any mat shape is possible!



Weight:

Approx. 17 kg/m²

Cleaning:

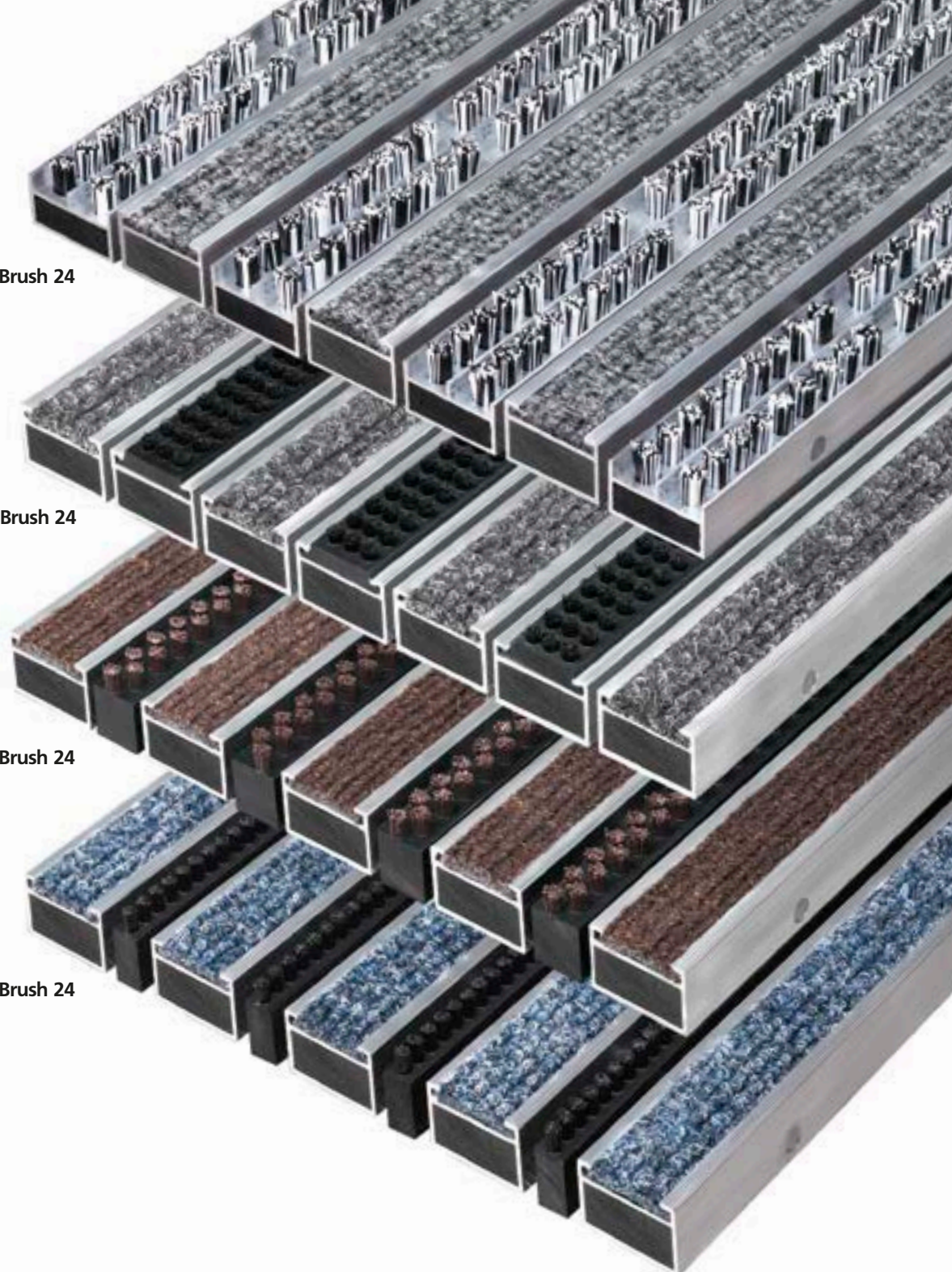
Simply vacuum the surface and the underlying surface (ideally daily). For tough dirt, brush out with a coarse brush and then vacuum.

Tender specification:

HAGOMAT Combiclean Brush. . . ., Part no.
with coarse-fibre rib and bristle strips.
Colour of coarse-fibre ribs.
Colour of the bristles.
Made to measure without compensating end profiles.
Reaction to fire Cfl-s1. Deliver and install.

Part no.	Product description	Approx. mat height	Compatible angle frame inside height (see page 7)
11 208	Hagomat Combiclean Brush 24 Exklusiv bristle strip	24 mm	23 mm
11 245	Hagomat Combiclean Brush 24 Mondial bristle strip	24 mm	23 mm
11 175	Hagomat Combiclean Brush 17 Mondial bristle strip	17 mm	17 mm
11 125	Hagomat Combiclean Brush 12 Mondial bristle strip	12 mm	12 mm
11 206	Hagomat Combiclean Brush 24 Nova bristle strip	24 mm	23 mm
11 204	Hagomat Combiclean Brush 24 narrow bristle strip	24 mm	23 mm

Versions with Exklusiv bristle strip and with Mondial bristle strip (only 17 and 24 mm) can also be delivered in the **reinforced version** and with **10 mm profile spacing**. See the price list for details.



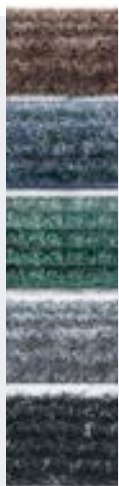
HAGOMAT Combiclean Brush 24
with Exclusiv bristle strip

HAGOMAT Combiclean Brush 24
with Mondial bristle strip

HAGOMAT Combiclean Brush 24
with Nova bristle strip

HAGOMAT Combiclean Brush 24
with narrow bristle strip

Available colours
Coarse-fibre ribs:



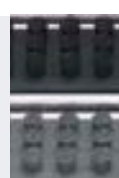
- 12 brown
- 04 blue
- 13 green
- 05 light grey
- 01 anthracite

Available colours
Exklusiv bristle strip:



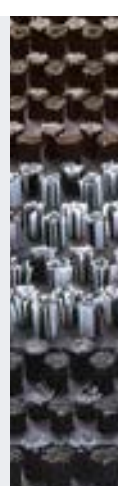
- 12 brown
- 19 platin
- 14 red
- 13 green
- 15 blue
- 11 light grey
- 17 black

Available colours
Mondial bristle strip:



- 17 black
- 05 grey

Available colours
Nova bristle strip:



- 12 brown
- 11 light grey
- 17 black

Available colours
narrow bristle strip:



- 17 black



Modern entrances

Materials:

Aluminium profile with grooved side bars.
Grooved rubber strips with superior wiping action.

Versions:

- 5 mm or 10 mm profile spacing
- With snow scraper bar
- Available in the reinforced version with a solid hard plastic core upon request.

Colours:

As shown on the left.

Features:

Weatherproof.
Ideally suited for coarse cleaning.
Sound dampened and non-slip from rubber strips on the underside.

Reaction to fire: Classified according to EN 11925-2 and EN-9239-1: Cfl-s1 (equivalent to B1, Q1 according to the previous ÖNORM)

Dimensions:

Mat height: 24 mm, 17 mm, 10 mm
Profile spacing: Approx. 5 mm or 10 mm
Profile length: Max. 2.00 m – longer mats are made in two or more parts.

Large mats must also be made in two or more parts in their walking depth as well. If the mat is to be self-supporting, then a crossbar must be laid every 30 cm.

Standard sizes (finished mat sizes):

59 × 39 cm, 79 × 49 cm
(10 mm profile spacing) Standard colours black and grey.

Shapes:

Any mat shape is possible!



Weight:

Approx. 15 kg/m² for 24 mm height
Approx. 14 kg/m² for 17 mm height
Approx. 12 kg/m² for 10 mm height

Cleaning:

Simply vacuum the surface and the underlying surface (ideally daily). For extreme dirt, hose off with pressurized water (e. g. high pressure water jet cleaner).

Tender specification:

HAGOMAT Combistrip. . . . , Part no.
with grooved side bars and grooved rubber inserts.
Colour of the rubber strips. Mat height:
Made to measure without compensating end profiles.
Reaction to fire: Cfl-s1. Delivery and installation.

HAGOMAT Combistrip 24
with rubber strips

HAGOMAT Combistrip 24
with snow scraper bar

HAGOMAT Combistrip 17
with rubber strips

HAGOMAT Combistrip 10
with rubber strips

Available colours:



05 grey

17 black

Part no.	Product description	Approx. mat height	Compatible angle frame inside height (see page 7)
11 300	Hagomat Combistrip 24 5 mm profile spacing	24 mm	23 mm
11 310	Hagomat Combistrip 24 10 mm profile spacing	24 mm	23 mm
11 302	Hagomat Combistrip 24 with snow scraper bar	24 mm	23 mm
11 325	Hagomat Combistrip 17 5 mm profile spacing	17 mm	17 mm
11 330	Hagomat Combistrip 17 10 mm profile spacing	17 mm	17 mm
11 357	Hagomat Combistrip 10 5 mm profile spacing	10 mm	12 mm

Also available in the reinforced version for the 24 mm and 17 mm heights.



Modern entrances.
Increased scraping action from additional brushing action.

Materials:

Aluminium profile with grooved side bars.
 Grooved rubber strips with superior scraping action.
 Superior grade 6.6 polyamide bristle strips.

Versions:

► **4 different brush strips to choose from (depending on the expected amount of dirt)**

Colours can be combined from:

Cleaning strips and optionally

- Exklusiv bristle strip
- Mondial bristle strip
- Nova bristle strip
- narrow bristle strip
 (as shown on the left).

Features:

Weatherproof.
 Ideally suited as a fine and coarse cleaner.
 Superior cleaning from additional brushing action.
 The mat must lie flush with the surface.
 Sound dampened and non-slip from rubber strips on the underside.

Reaction to fire: Classified according to EN 11925-2 and EN-9239-1: Cfl-s1 (equivalent to B1, Q1 from the previous ÖNORM)

Dimensions:

Mat height: 24 mm
 (with 24 mm, 17 mm or 12 mm Mondial bristle strip)
 Profile spacing: Approx. 5 mm
 Profile length: Max. 2.00 m – longer mats are made in two or more parts.

Large mats must also be made in two or more parts in their walking depth as well.

Standard sizes (finished mat sizes) with narrow bristle strip:

59 × 39 cm, 79 × 49 cm
 Standard colours black/black and grey/black.

Shapes:

Any mat shape is possible!



Weight:

Approx. 16 kg/m²

Cleaning:

Simply vacuum the surface and the underlying surface (ideally daily). For extreme dirt, hose off with pressurized water (e. g. high pressure water jet cleaner).

Tender specification:

HAGOMAT Combistrip Brush, Part no.
 with rubber strips and bristle strips.
 Colour of the rubber strips.
 Colour of the bristles.
 Made to measure without compensating end profiles.
 Reaction to fire: Cfl-s1. Deliver and install.

Part no.	Product description	Approx. mat height	Compatible angle frame inside height (see page 7)
11 340	Hagomat Combistrip Brush 24 Exklusiv bristle strip	24 mm	23 mm
11 345	Hagomat Combistrip Brush 24 Mondial bristle strip	24 mm	23 mm
11 375	Hagomat Combistrip Brush 17 Mondial bristle strip	17 mm	17 mm
11 377	Hagomat Combistrip Brush 12 Mondial bristle strip	12 mm	12 mm
11 304	Hagomat Combistrip Brush 24 Nova bristle strip	24 mm	23 mm
11 322	Hagomat Combistrip Brush 24 narrow bristle strip	24 mm	23 mm

Versions with the Exklusiv bristle strip and the Mondial bristle strip (only 17 mm and 24 mm) can also be delivered in the **reinforced version** and also with **10 mm profile spacing**. See the price list for details.



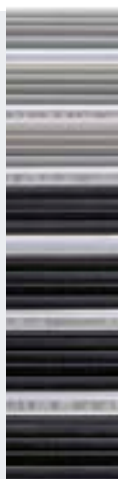
HAGOMAT Combistrip Brush 24
with Exklusiv bristle strip

HAGOMAT Combistrip Brush 24
with Mondial bristle strip

HAGOMAT Combistrip Brush 24
with Nova bristle strip

HAGOMAT Combistrip Brush 24
with narrow bristle strip

**Available colours
Rubber strips:**



05 grey

17 black

**Available colours
Exklusiv bristle strip:**



12 brown

19 platin

14 red

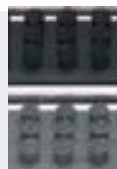
13 green

15 blue

11 light grey

17 black

**Available colours
Mondial bristle strip:**



17 black

05 grey

**Available colours
Nova bristle strip:**



12 brown

11 light grey

17 black

**Available colour
narrow bristle strip:**



17 black



Aluminium design entrance mat for modern entrances.

Materials:

Aluminium profile with grooved aluminium stripes.

Versions:

- 5 mm or 10 mm profile spacing
- Combined with Combiclean strip (coarse-fibre ribs)
- Combined with Combistrip strip (rubber strips)
- Reinforced version available with hard plastic core upon request

Colours:

As shown on the left.

Features:

Weatherproof.
Ideally suited as a coarse cleaner.
The mat must lie flush with the surface.
Sound dampened and non-slip from rubber strips on the underside.

Reaction to fire: Classified according to EN 11925-2 and EN 9239-1.

Cfl-s1 (with Combiclean strip)

Cfl-s1 (with Combistrip strip)

Dimensions:

Mat height: 10 mm, 17 mm or 24 mm

Profile spacing: Approx. 5 mm or approx. 10 mm

Profile length: Max. 2.00 m – longer mats are made in two or more parts.

Large mats must also be made in two or more parts in their walking depth as well.

Shapes:

Any mat shape is possible!



Weight:

Approx. 18 kg/m² for 24 mm height

Approx. 16 kg/m² for 17 mm height

Approx. 14 kg/m² for 10 mm height

Cleaning:

Simply vacuum the surface and the underlying surface (*ideally daily*). For extreme dirt, hose off with pressurised water (e. g. high pressure water jet cleaner).

Tender specification:

HAGOMAT Alugrip., Part no.

Aluminium profile with grooved aluminium stripes.

Optionally with Combistrip strip:

Colour of the rubber strips.

Optionally with Combiclean strip:

Colour of coarse-fibre ribs.

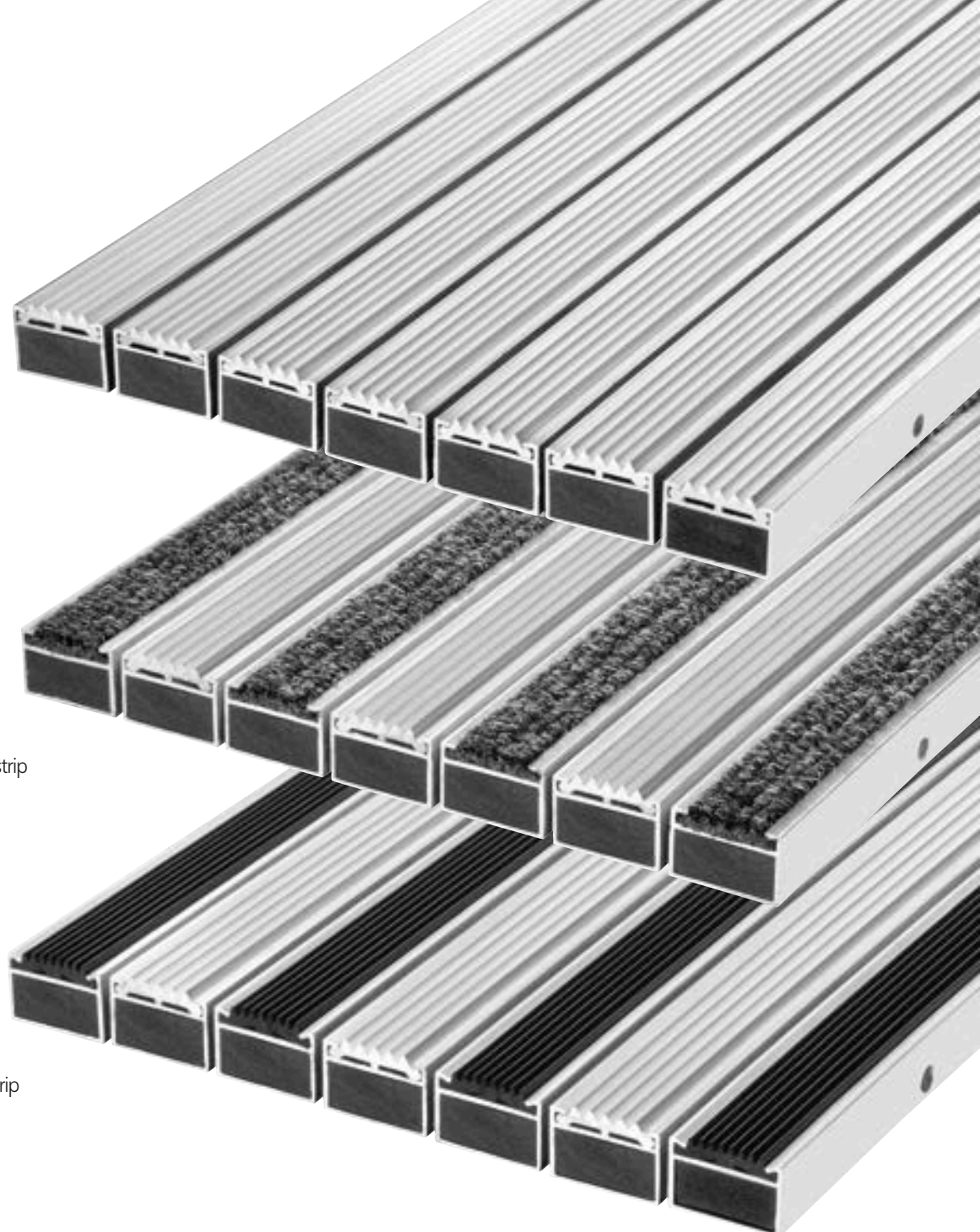
Made to measure without compensating end profiles.

Reaction to fire: Cfl-s1 with Combistrip strip.

Cfl-s1 with Combiclean strip. Deliver and install.

Part no.	Product description	Approx. mat height	Compatible angle frame inside height (see page 7)
11 700	Hagomat Alugrip 24 5 mm profile spacing	24 mm	23 mm
11 725	Hagomat Alugrip 17 5 mm profile spacing	17 mm	17 mm
11 757	Hagomat Alugrip 10 5 mm profile spacing	10 mm	10 mm
11 750	Hagomat Alugrip 24 with Combiclean strip	24 mm	23 mm
11 753	Hagomat Alugrip 17 with Combiclean strip	17 mm	17 mm
11 758	Hagomat Alugrip 10 with Combiclean strip	10 mm	10 mm
11 760	Hagomat Alugrip 24 with Combistrip strip	24 mm	23 mm
11 763	Hagomat Alugrip 17 with Combistrip strip	17 mm	17 mm
11 767	Hagomat Alugrip 10 with Combistrip strip	10 mm	10 mm

Also available in the reinforced version for the 17 mm and 24 mm heights.



HAGOMAT Alugrip 24

HAGOMAT Alugrip 24
combined with Combiclean strip
(coarse-fibre ribs)

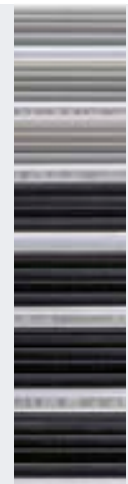
HAGOMAT Alugrip 24
combined with Combistrip strip
(rubber strips)

**Available colours
Coarse-fibre ribs:**



- 12 brown
- 04 blue
- 13 green
- 05 light grey
- 01 anthracite

**Available colours
Rubber strips:**



- 05 grey
- 17 black



Alugrip Brush at the Vienna Central Station

Modern entrances. Increased scraping action from additional brushing action.

Materials:

Aluminium profile with grooved aluminium strips.
Superior grade 6.6 polyamide bristle strips.

Versions:

➤ **3 different brush strips to choose from (depending on the expected amount of dirt)**

Colours can be combined from:
aluminium strips and optionally

- Exklusiv bristle strip
- Mondial bristle strip
- Nova bristle strip

(as shown on the left).

Features:

Weatherproof.
Ideally suited as a coarse cleaner.
Superior cleaning from additional brushing action.
The mat must lie flush with the surface.
Sound dampened and non-slip from rubber strips on the underside.

Reaction to fire:

Classified according to EN 11925-2 and EN 9239-1.
Bfl-s1 (with Exklusiv strip or Mondial strip)
Cfl-s1 (with Nova strip)

Dimensions:

Mat height: 24 mm
(with 24 mm, 17 mm or 12 mm Mondial bristle strip)
Profile spacing: Approx. 5 mm
Profile length: Max. 2.00 m – longer mats are made in two or more parts.

Large mats must also be made in two or more parts in their walking depth as well.

Shapes:

Any mat shape is possible!



Weight:

Approx. 19 kg/m² for 24 mm height
Approx. 17 kg/m² for 17 mm height
Approx. 14 kg/m² for 12 mm height

Cleaning:

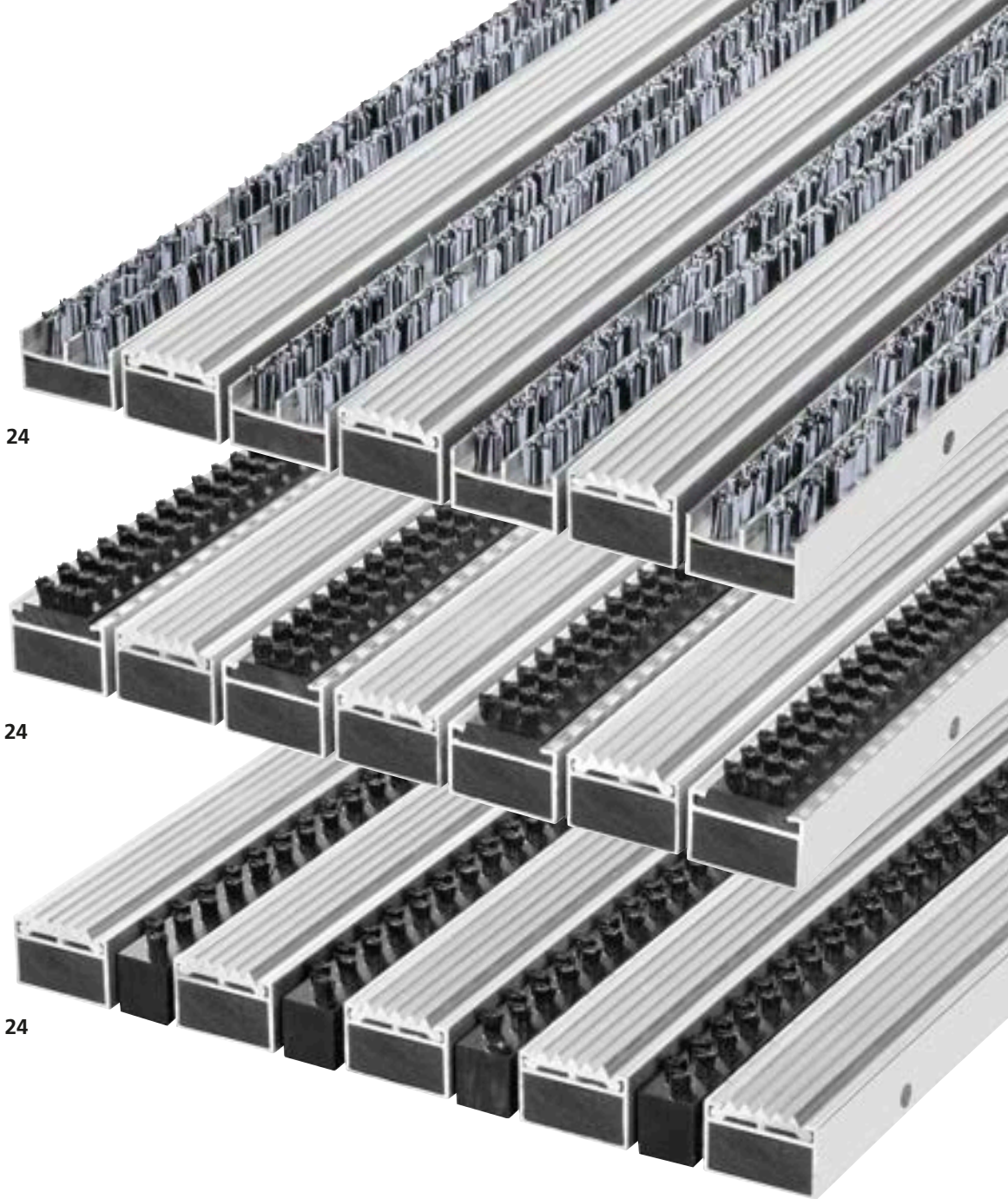
Simply vacuum the surface and the underlying surface (ideally daily). For extreme dirt, hose off with pressurised water (e. g. high pressure water jet cleaner).

Tender specification:

HAGOMAT Alugrip Brush., Part no.
Aluminium profile with grooved aluminium strips and bristle strips.
Colour of the bristles.
Made to measure without compensating end profiles.
Reaction to fire: Bfl-s1 with the Exklusiv strip or Mondial strip
Cfl-s1 with the Nova strip

Part no.	Product description	Approx. mat height	Compatible angle frame inside height (see page 7)
11 740	Hagomat Alugrip Brush 24 with the Exklusiv bristle strip	24 mm	23 mm
11 745	Hagomat Alugrip Brush 24 with the Mondial bristle strip	24 mm	23 mm
11 775	Hagomat Alugrip Brush 17 with the Mondial bristle strip	17 mm	17 mm
11 777	Hagomat Alugrip Brush 12 with the Mondial bristle strip	12 mm	12 mm
11 704	Hagomat Alugrip Brush 24 with the Nova bristle strip	24 mm	23 mm

Versions with the Exklusiv bristle strip and the Mondial bristle strip (only 17 mm and 24 mm) can also be delivered in the reinforced version and also with 10 mm profile spacing. See the price list for details.



HAGOMAT Alugrip Brush 24
with Exklusiv bristle strip

HAGOMAT Alugrip Brush 24
with Mondial bristle strip

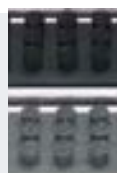
HAGOMAT Alugrip Brush 24
with Nova bristle strip

Available colours
Exklusiv bristle strip:



- 12 brown
- 19 platin
- 14 red
- 13 green
- 15 blue
- 11 light grey
- 17 black

Available colours
Mondial bristle strip:



- 17 black
- 05 grey

Available colours
Nova bristle strip:



- 12 brown
- 11 light grey
- 17 black



In front: **HAGOMAT Trittform** in tangerine (special colour available upon request)
 Revolving door: **HAGOMAT Trittform** black

**Entrances to supermarkets, department stores, schools and the like as a pre-cleaner.
 Optimally suitable for shopping cart and light hand truck traffic.**

Material:
 Thermoplastic polymer, impact modified.

Versions:
 ► 2 mat heights: 18 mm and 10 mm

Colours:
 As shown at the bottom left (black, silver grey).
 Special colours are available on customer request from approx. 20 m².

Features:
 Can be used indoors and outdoors.
 Can be washed out.
 Can be rolled up. Superior anti-skid protection.
 High chemical resistance (please contact us in individual cases!).
 Very abrasion resistant.
 Optimally suitable for shopping cart and light hand truck traffic.

Reaction to fire: Classified according to EN 11925-2 and EN 9239-1. Bfl-s2

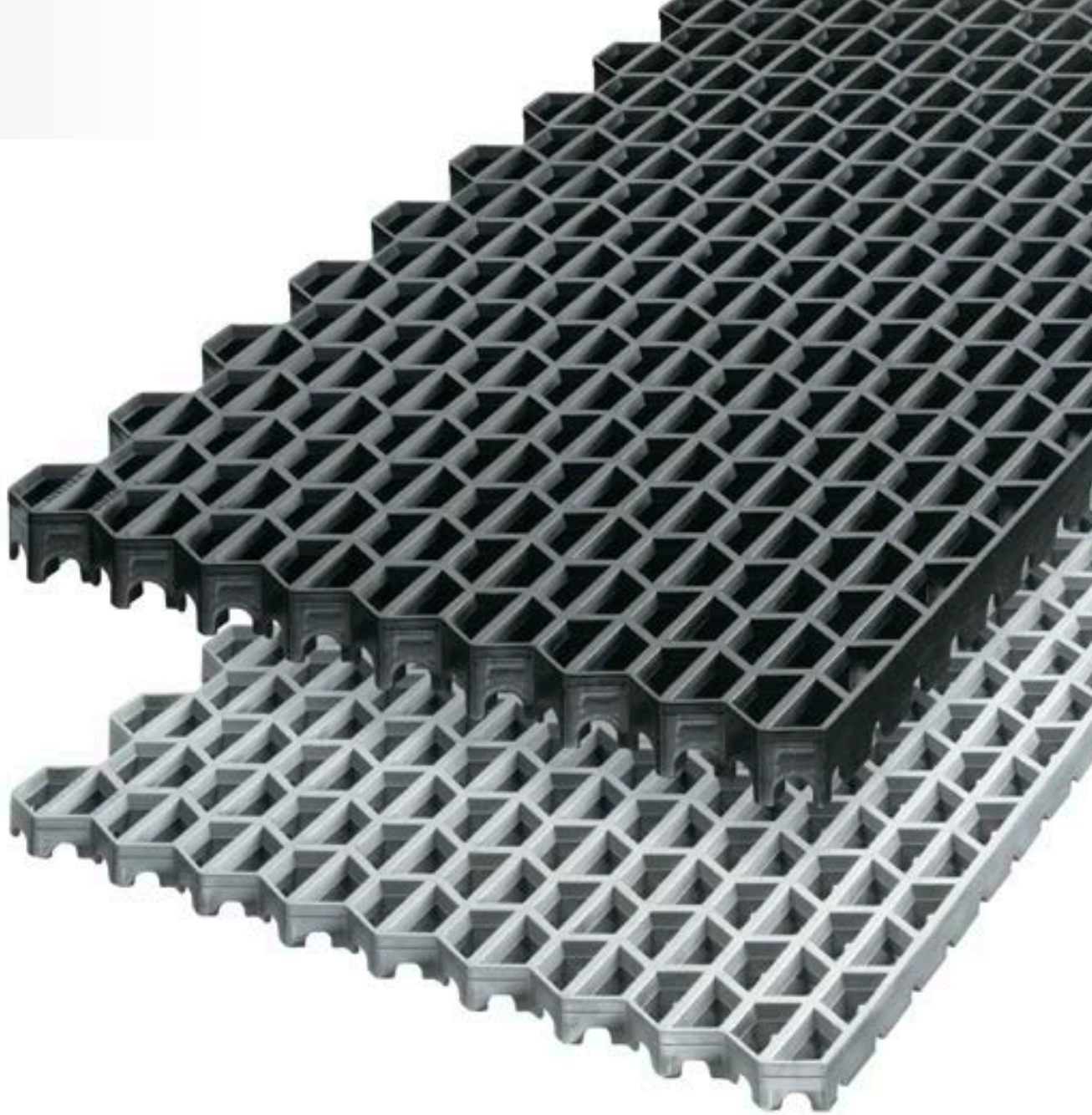
Dimensions:
 Mat height: 18 mm and 10 mm
 Large mats are made in many parts.
 Please fit mats tightly whenever you install them.
 Subsequent material (vinyl)shrinkage of approx. 1 % is possible.

Shapes:
 Any mat shape is possible!



Weight:
 18 mm mat height approx. 10 kg/m²
 10 mm mat height approx. 7 kg/m²

Tender specification:
HAGOMAT Trittform . . . , Part no.
 Mat height Colour
 Made to measure.
 Reaction to fire: Bfl-s2. Deliver and install.



Available colours*:



silver-grey

black

Part no.	Product description	Approx. mat height	Compatible angle frame inside height (see page 7)
14 100	Hagomat Trittform 18	18 mm	20 mm
14 200	Hagomat Trittform 10	10 mm	12 mm

**) special colours (RAL colours) are also available upon request from approx. 20m².*



HAGOMAT Wabe I
Open floor, Part no. 12 000
With round brushes, Part no. 19 900



HAGOMAT Wabe I
Open floor
Part no. 12 000



HAGOMAT Wabe I
Solid floor
Part no. 12 100



HAGOMAT Wabe II
Open floor
Part no. 12 200



HAGOMAT Wabe II
Solid floor
Part no. 12 300

Use as a universal floor mat

Material:
Superior grade solid rubber.

Versions:
 ➤ Open floor
 ➤ Solid floor
 ➤ 2 heights, 2 honeycomb designs

Colour: Black

Features:
 Weatherproof.
 Road-salt resistant.
 Superior dirt collection capacity.
 Shock absorbent and sound dampening (e.g. in ski lifts).
 Can be washed out.
 Can be rolled up.

Dimensions:
 Mat height: Wabe I 22 mm
 Wabe II 18 mm and 22 mm
 For standard sizes, see the price list for details.

Accessories:
 Round brushes for optimal cleaning.
 Available in red, black, blue, green, yellow.
 Delivered separately.
 Simply press the brushes into the round holes.

Shapes:
 Any mat shape is possible!

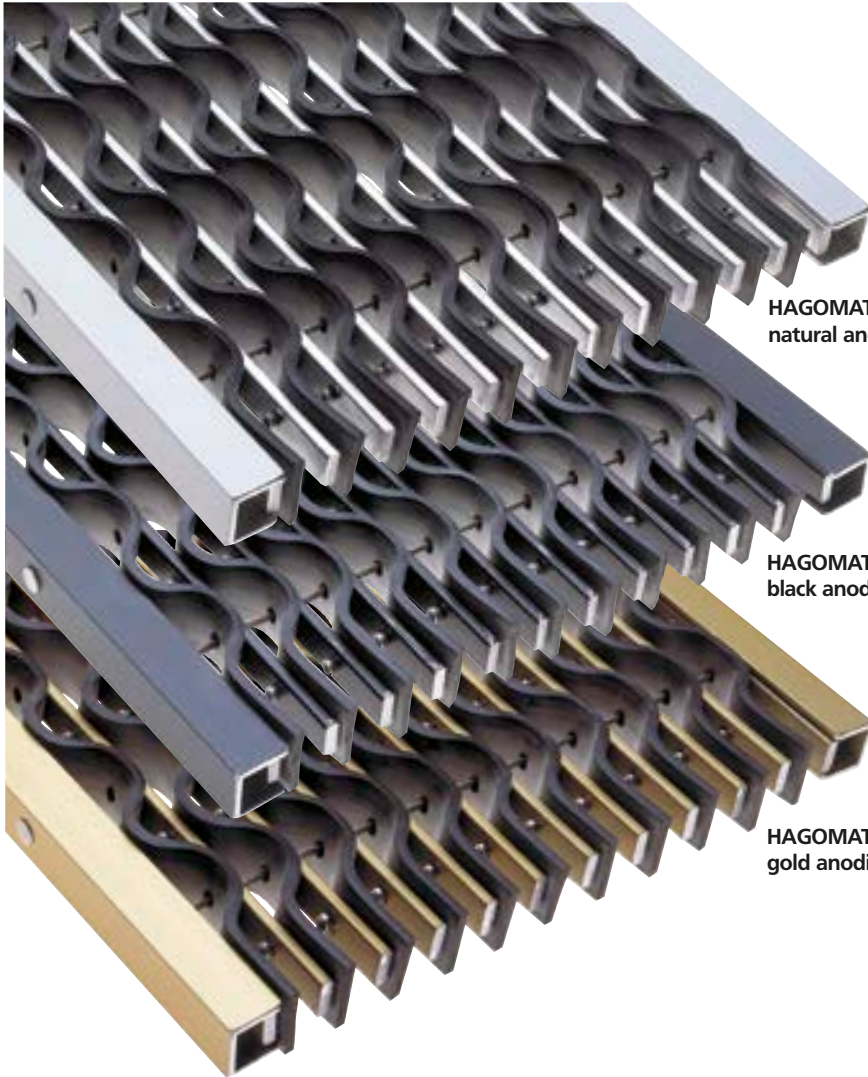


Weight:
 Approx. 14 kg/m² – Wabe I
 Approx. 9 kg/m² – Wabe II

Tender specification:
HAGOMAT Wabe., Part no.
 Colour black.
 Deliver and install.

Part no.	Product description	Approx. mat height	Compatible angle frame inside height (see page 7)
12 000	Hagomat Wabe I open floor	22 mm	23 mm
12 100	Hagomat Wabe I solid floor	22 mm	23 mm
12 200	Hagomat Wabe II open floor	22 mm	23 mm
12 300	Hagomat Wabe II solid floor	22 mm	23 mm
12 201	Hagomat Wabe II open floor	18 mm	17 mm
12 301	Hagomat Wabe II solid floor	18 mm	17 mm
19 900	Hagomat round brushes		





HAGOMAT Wellform natural anodised

HAGOMAT Wellform black anodised

HAGOMAT Wellform gold anodised

Entrances to be furnished with a pre-cleaning mat.

Materials:

Corrugated rubber strips that are riveted onto flat aluminium bars.

Versions/colours:

- Natural anodised aluminium
- Natural anodised aluminium
- Gold anodised aluminium
- The reinforced version is also available on request.

Features:

Weatherproof and UV resistant.
For indoor and outdoor use.
Can be rolled up.
Reversible.
The mat must lie flush with the surface.

Dimensions:

Mat height: 22 mm

Shapes:

Available only in rectangular shapes.
Two or multi-piece design from 2.00 m profile length.



Weight:

Approx. 12 kg/m²

Tender specification:

HAGOMAT Wellform 22, Part no 15 000
Anodised colour:
Deliver and install.



Part no.	Product description	Approx. mat height	Compatible angle frame inside height (see page 7)
15 000	Hagomat Wellform	22 mm	23 mm



Frequent foot and vehicle traffic.

Materials:
Aluminium support profile with scraper bar.
Roughened rubber strips with integrated nylon as a scraper.

Colours:
Rubber strips in 6 colours available
(as shown below).

Features:
Can be used indoors and outdoors.
Extremely durable. Permits traffic from shopping carts, hospital beds, light hand trucks up to 1000 kg, etc.
Good scraping action and high drying rate from roughened surface. Cannot be rolled up. Reversible.
Mat must lie flat and completely flush with the surface.

Dimensions:
Mat height: 17 mm
Profile length: Max. 3.00 m
Walking depth: Max. 0.55 m
Large mats must also be made in two or more parts.

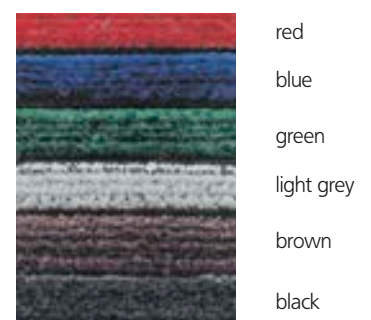
Weight:
Approx. 14 kg/m²

Tender specification:
HAGOMAT Jumbo 17, Part no 20 200
Aluminium support profile with scraper bar.
Roughened solid rubber strips with integrated nylon. Colour
Deliver and install.

Part no.	Product description	Approx. mat height	Compatible angle frame inside height (see page 7)
20 200	Hagomat Jumbo 17 solid design	17 mm	17 mm



Available colours
Rubber strips:





Clear design meets the highest architectural standards. Reversible.

Material:

Co-extruded (hard and elastic areas) vinyl profiles, aluminium connection profile

Colours:

Black (as shown on the left)

Features:

Sturdy, modern entrance mat meets the highest architectural standards. Ideally suited as a coarse cleaner. Long service life. Reversible. Suitable for shopping cart, pushchair, wheelchair traffic, etc.

Reaction to fire:

classified according to EN 11925-2 and EN-9239-1 classified: Cfl-s1 (equivalent to B1, Q1 according to the previous ÖNORM)

Dimensions:

Mat height: 15 mm
Profile length: max. 3.00 m
Larger mats are made in two or many parts.

Shapes:

any mat shape is possible!



Weight:

10 kg/m²

Cleaning:

Simply vacuum the surface and the underlying surface (ideally daily). For major dirt, hose off with pressurised water (e. g. high pressure water jet cleaner).

Tender specification:

HAGOMAT Progress 15, Part no 14 600, Co-extruded vinyl profile mat. Colour: black. Reversible. Reaction to fire: Cfl-s1. Delivery and installation.



Part no.	Product description	Approx. mat height	Compatible angle frame inside height (see page 7)
14 600	Hagomat Progress 15	15 mm	17 mm



Efficient fine cleaner mat with good value for money

Materials:
Polypropylene

Colours:
Anthracite

Features:
Fine ribbed mat with good drying effect.
Excellent value for money

Dimensions:
Mat height: approx. 14 mm
Roll width: 2 m
We make all possible formats from these rolls.
Larger mats in several parts.

Weight:
3,5 kg/m²

Cleaning:
by vacuuming

Part no.	Product description	Approx. mat height	Compatible angle frame inside height (see page 7)
18500	Hagomat Varea Tex Eco 14	14 mm	12 mm



High-quality fine cleaner mat with strong cleaning power

Materials:
Polypropylene with nylon strips

Colours:
Anthracite

Features:
High-quality fine ribbed mat. Alternating textile strips with drying and brushing action.

Dimensions:
Mat height: approx. 12 mm
Roll width: 2 m
We make all possible formats from these rolls.
Larger mats in several parts.

Weight:
3,2 kg/m²

Cleaning:
by vacuuming

Part no.	Product description	Approx. mat height	Compatible angle frame inside height (see page 7)
18300	Hagomat Varea Tex Pro 12	12 mm	12 mm



*Proven fine cleaner mat
Modern design through
aluminium strips*

Materials:

Polypropylene and aluminium

Colours:

Anthracite

Features:

Fine ribbed mat with drying effect High-quality design through aluminium profiles

Dimensions:

Mat height: approx. 12 mm

Roll width: 2 m

We make all possible formats from these rolls.

Larger mats in several parts.

Weight:

4 kg/m²

Cleaning:

by vacuuming.

Part no.	Product description	Approx. mat height	Compatible angle frame inside height (see page 7)
18200	Hagomat Varea Tex-Alu Eco 12	12 mm	12 mm



*High-quality fine cleaner
Fibre structure with brushing
action Modern design
through aluminium strips*

Materials:

Polyamide, polypropylene and aluminium

Colours:

Anthracite

Features:

Very high-quality fine ribbed mat with aluminium profiles. Fine ribbed mat with good scraping action thanks to special fibre structure.

Dimensions:

Mat height: approx. 12 mm

Roll width: 2 m

We make all possible formats from these rolls.

Larger mats in several parts.

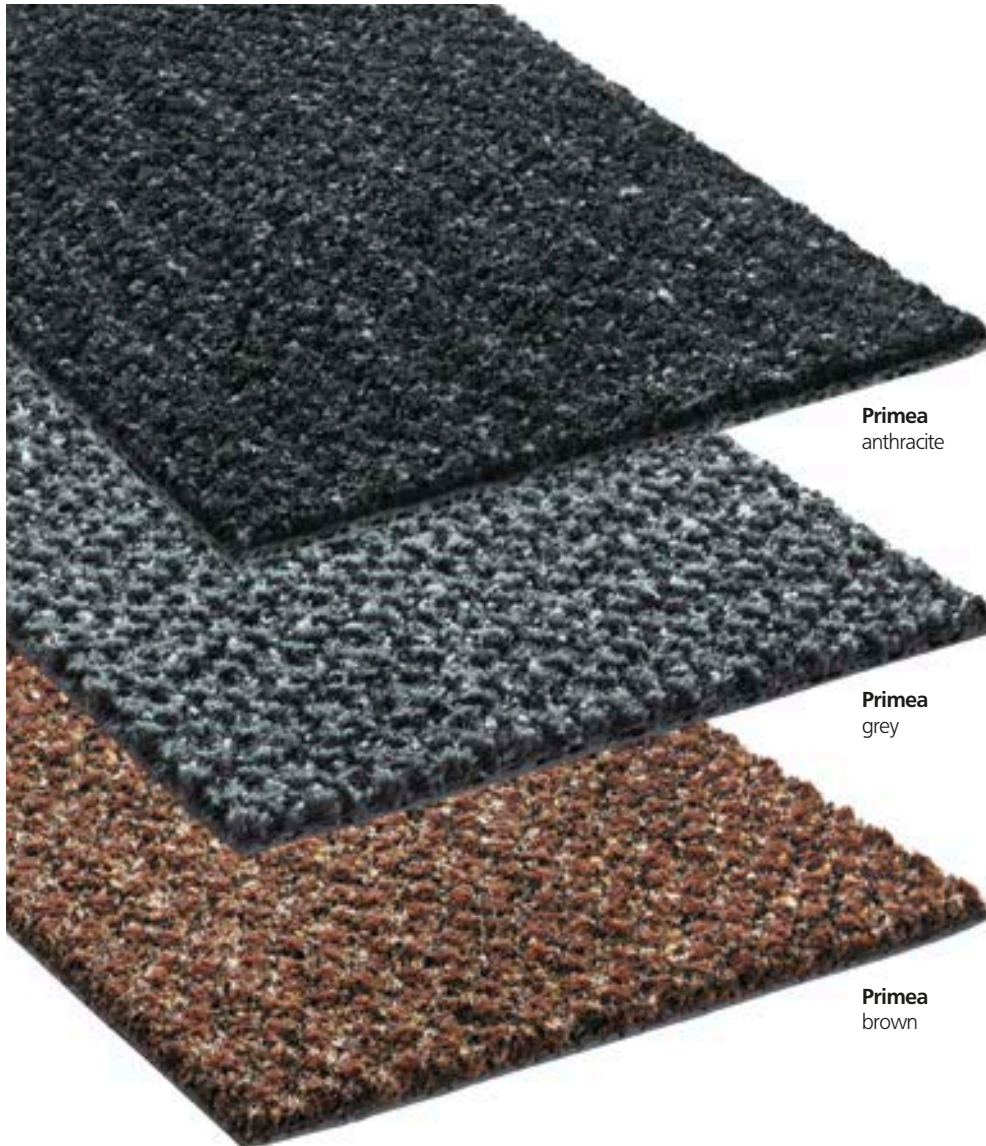
Weight:

6 kg/m²

Cleaning:

by vacuuming

Part no.	Product description	Approx. mat height	Compatible angle frame inside height (see page 7)
18400	Hagomat Varea Tex-Alu Pro 12	12 mm	12 mm



Primea
anthracite

Primea
grey

Primea
brown

Fine ribbed mat with low installation height in superior property quality

Material:
Pile fabric made from 100 % polyamide fibres.

Colours:
As shown below.

Features:
High performance and durable fine ribbed mat. The special fibre structure allows for very good scraping action.

Reaction to fire:
Classified according to EN 11925-2 and EN 9239-1. Cfl-s1 (equivalent to B1,Q1 from the previous ÖNORM)

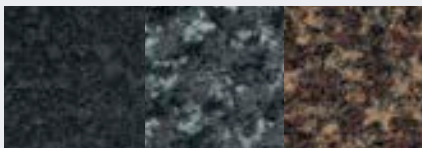
Cleaning:
By vacuuming.

Dimensions:
Mat height: Approx. 10 mm
Roll width: 2 m incl. 2-sided edge
We make all possible formats from these rolls.
Larger mats made in several parts.

Weight:
Pile weight: approx. 1050 g/m²
Total weight: approx. 3700 g/m²

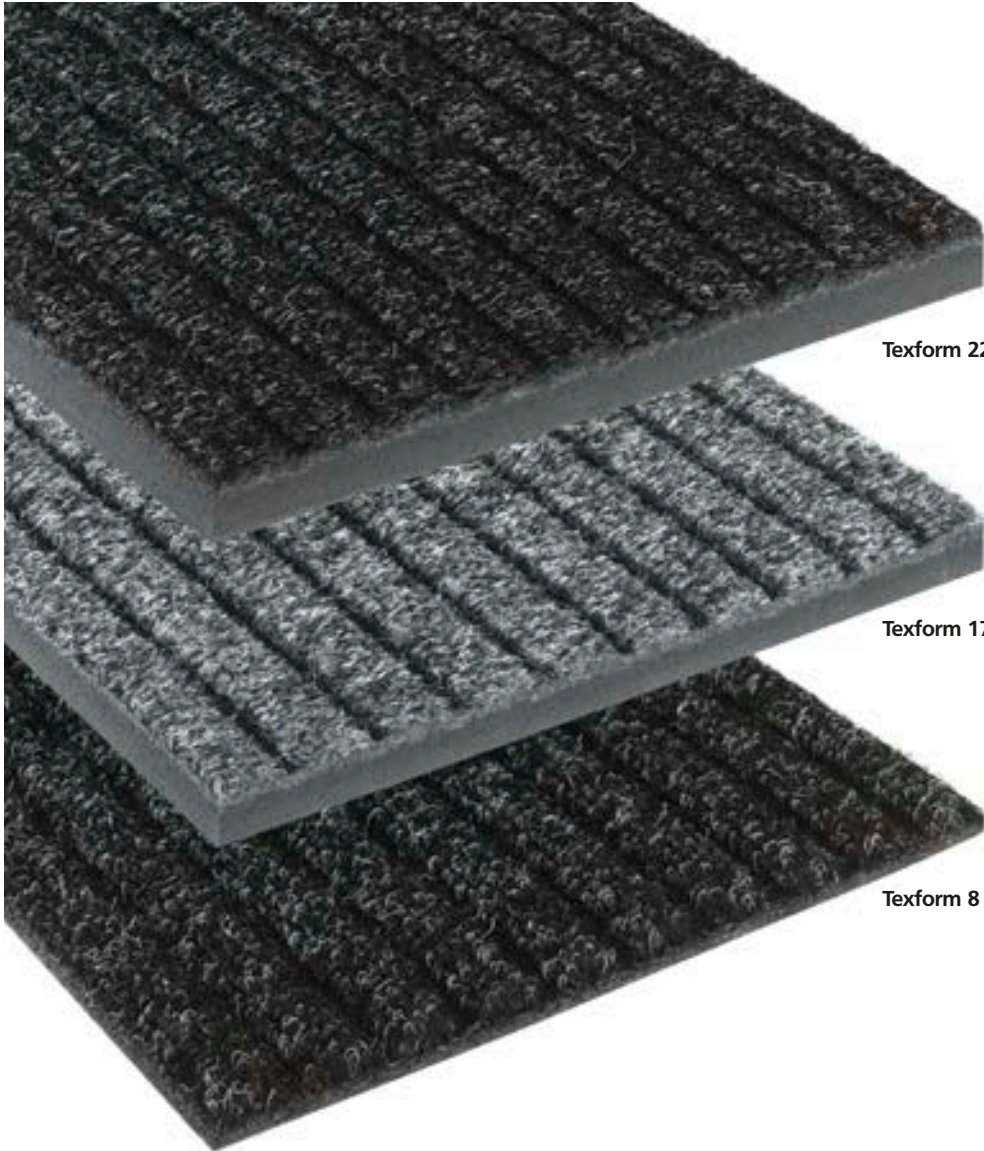
Tender specification:
HAGOMAT Primea 10, Part no 17200
Superior grade fine ribbed mat made from 100% 6.6 polyamide fibres, Colour
Reaction to fire: Cfl-s1. Deliver and install.

Available colours:



anthracite grey brown

Part no.	Product description	Approx. mat height	compatible angle frame inside height (see page 7)
17 200	Hagomat Primea 10	10 mm	12 mm



Robust coarse-fibre ribbed mat, available in 3 heights.

Material:

Needle-punched nonwoven made from polypropylene.

Versions:

3 designs with foam backing of varying height.

Colours:

As shown below.

Features:

Good cleaning action from the ribbed structure.

High quality alternative to coconut mat.

Cleaning:

By vacuuming.

Dimensions:

Mat height: 22 mm
17 mm
8 mm

Roll width: 2.00 m

We make all possible formats from these rolls.

Larger mats made in several parts.

Standard size:

59 x 39 cm

Weight:

22 mm: approx. 7 kg/m²
17 mm: approx. 5 kg/m²
8 mm: approx. 3 kg/m²

Tender specification:

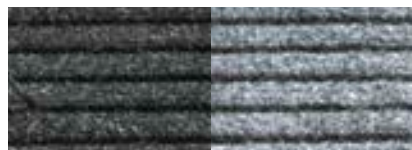
HAGOMAT Texform

Part no

Superior coarse-fibre ribbed mat made from polypropylene. Mat height:

Colour, Deliver and install.

Available colours:



anthracite

light grey



Part no.	Product description	Approx. mat height	Compatible angle frame inside height (see page 7)
17 500	Hagomat Texform 22 22 mm	22 mm	23 mm
17 800	Hagomat Texform 17 17 mm	17 mm	17 mm
17 900	Hagomat Texform 8 8 mm	8 mm	



Materials:
Natural coconut fibre with a strong synthetic backing.

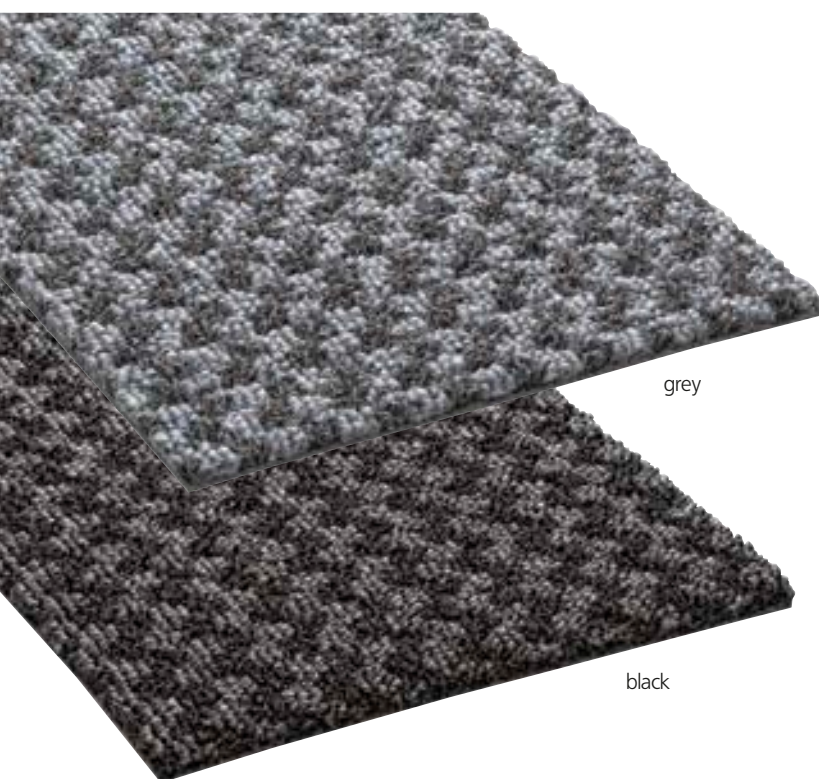
Colour:
Natural coconut fibre as shown.

Features:
Homely character.
For indoor use only.
Low cleaning action.
Product-specific service life.
Individual fibres can come loose until the mat has been worn in.

Dimensions:
Mat height: 24 mm
Roll width: 2.00 m
We make all possible formats from this roll width.
Larger mats in several parts.

Weight:
Approx. 8 kg/m²

Part no.	Product description	Approx. mat height	Compatible angle frame inside height (see page 7)
12 900	Hagomat Kokos 24	24 mm	23 mm



grey

black



Recommended for: Indoor use, following a coarse cleaning mat.

Materials:
Two-fibre system made from polypropylene, PVC-free backing.

Dimensions:
Mat height: approx. 10 mm
Standard sizes with a 2.5 cm tread border on all 4 sides.
Mat height: Approx. 10 mm
Roll width: 2 m incl. 2-sided edge
We make all possible formats from this roll width.
Larger mats in several parts.

Colours:
grey, black.

Features:
Coarse fibre for scraping action.
Fine fibres for absorption.
Long service life.
Clean by vacuuming.

Weight:
approx. 3,0 kg/m²

Part no.	Product description	Approx. mat height
16 500	Hagomat Enhance 10	10 mm

Superior fine ribbed mat with a 4-sided tread border.



Black Pearl

Granite

Black Brown

Material:

Pile material made from high-twist nylon (HTN) nitrile rubber (NBR) backing

Colours:

As shown on the bottom left.

Available in all 9 colours in the 85 cm, 115 cm and 150 cm standard widths. Available in 5 colours (see ✱) in the 200 cm standard width.

Features:

Durable fine ribbed mat with superior absorption. With a 4-sided tread border.

Reaction to fire:

Classified according to EN 11925-2 and EN 9239-1. Cfl-s1 (equivalent to B1, Q1 from the previous ÖNORM).

Cleaning:

By vacuuming.

Dimensions:

Mat height: 11–12 mm
 Standard widths: 85 cm
 115 cm
 150 cm
 200 cm
 Standard lengths: up to 400 cm (overlengths up to 700 cm)

Special sizes possible

Dimensional tolerances of up to ±5 % are possible.

Weight:

Pile weight: approx. 700 g/m²
 Total weight: approx. 2600 g/m²

Tender specification:

HAGOMAT Cordia 11.
 Part no. 22000,
 Superior grade fine ribbed mat, with 4-sided tread border, made from high-twist nylon and nitrile rubber Colour
 Reaction to fire: Cfl-s1
 Deliver and install.

Available colours:



Black Blue Black Brown Black Cedar ✱ Black Mink Black Pearl ✱



Black Scarlet Black Steel ✱ Granite ✱ Midnight Grey ✱



Part no.	Productdescription	Approx. mat height
22 000	Hagomat Cordia 11	11 mm



Material: Solid rubber fine ribbed mat.

Colour: Black

Features / Application:

Fine grooves (striation) in a longitudinal direction.
 Honeycombed underside.
 Adhesive.
 As an anti-slip covering for inclined surfaces, in the work area, etc.
 Always install perpendicular to the walking depth.
 Secure it from slipping by bonding it using contact cement.
 It can be cut using any Stanley-type knife.

Dimensions:

Mat thickness: approx. 3 mm
 Roll size: 10 × 1 m

Weight:

approx. 3.3 kg/m²

Part no.	Product description	Approx. mat height
21 900	Hagomat Rillmat 3	3 mm



Materials:

Recycled rubber granulate bound in high quality polyurethane.

Colour: As shown.

Features:

Used as an underlay mat beneath other entrance mats to achieve the necessary height level.

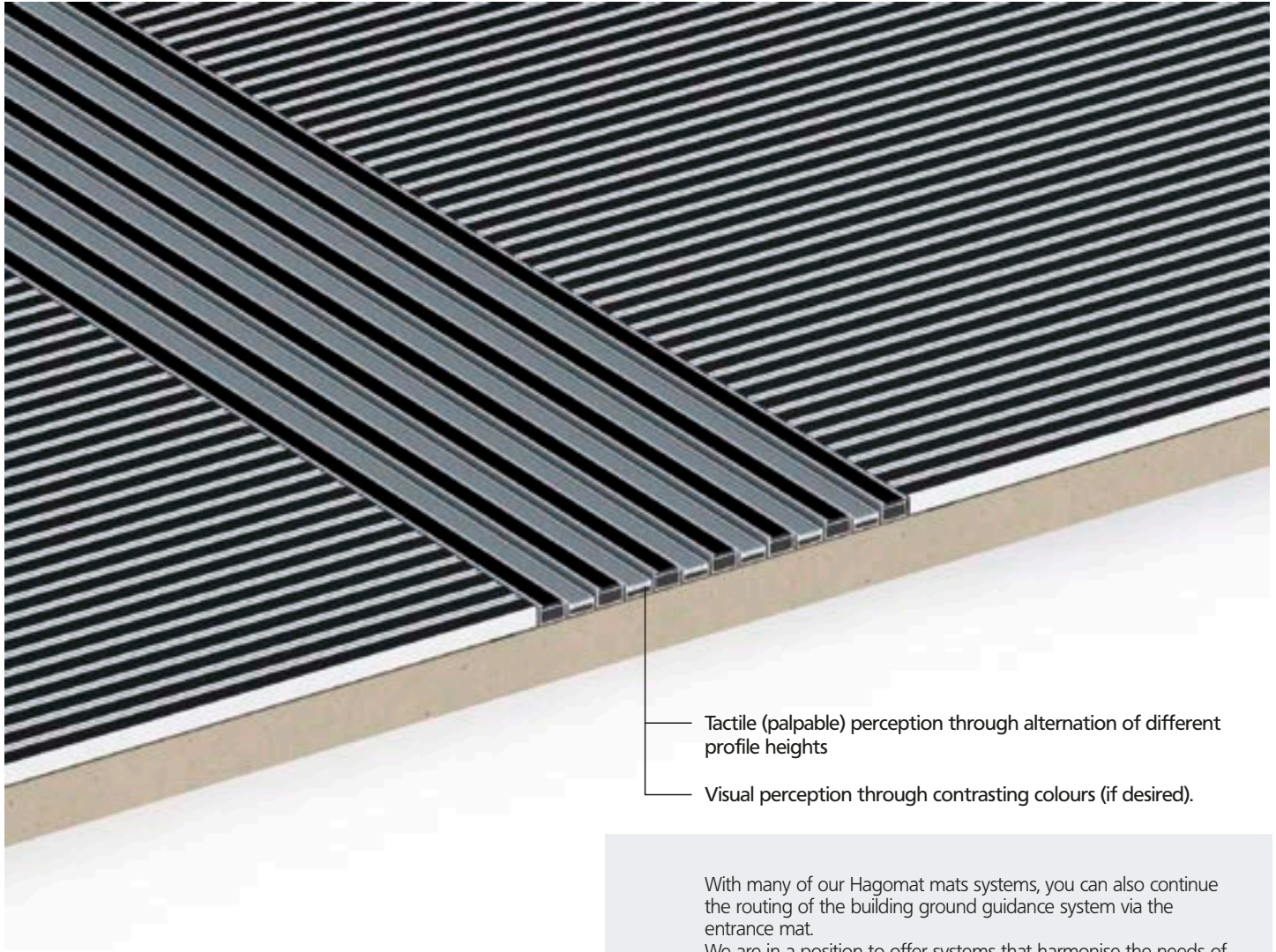
Dimensions:

Mat height: 6 mm
 10 mm
 Roll width: 1.25 m
 We make all possible formats from this roll width.

Weight:

5.3 kg/m² (6 mm)
 8.8 kg/m² (10 mm)

Part no.	Product description	Mat height
21 100	Hagomat Granulatmatte 6	6 mm
21 200	Hagomat Granulatmatte 10	10 mm



Tactile (palpable) perception through alternation of different profile heights

Visual perception through contrasting colours (if desired).

With many of our Hagomat mats systems, you can also continue the routing of the building ground guidance system via the entrance mat.

We are in a position to offer systems that harmonise the needs of blind and visually impaired people with the architectural requirements of the entrance area.

We're pleased to advise you



District Court of St. Pölten



Salzburg Town Parish



Vienna University of Economics and Business

Angle frames:

Angle frames come ready-made or disassembled depending on size. Disassembled angle frames have corner connections that can be easily mounted. When moving the frame, make sure that this is at the correct angle, bulges neither outwards nor inwards, and that the corner connection is closed. If necessary, temporary spacers must be used when moving the frame.

Supporting surface:

The supporting surface for the mat must be **absolutely level**. A drain is recommended for outdoor mats.

Sun exposure / Dimensional tolerances:

The mat expands when exposed to sunlight. Please plan approx. 1 mm expansion per m¹. Several factors may lead to differences in size. We try to avoid this. For larger mats as well as deformable mats, however, you must expect a certain difference. For customised profile mats, the exact longitudinal dimension is achieved by using various spacers. The specified profile spacings are therefore approximate dimensions.

Cleaning:

Only a cleaned mat can fulfill its function. For high frequency foot traffic, the mat should be cleaned at least 1 x day on the surface. We recommend to occasionally take the mat out of the frame to also clean the contact surface.

Warranty:

The **HAGOMAT Exklusiv** has a 5 year warranty that covers its functionality, fit and durability. Normal wear from foot traffic and overuse from vehicles, light hand trucks, etc. are excluded from the warranty. The warranty covers repairs or replacement. Transportation costs are not covered by the warranty.

Special cases:

For special cases regarding usage, i.e. when moving the mats, please ask for our advice.

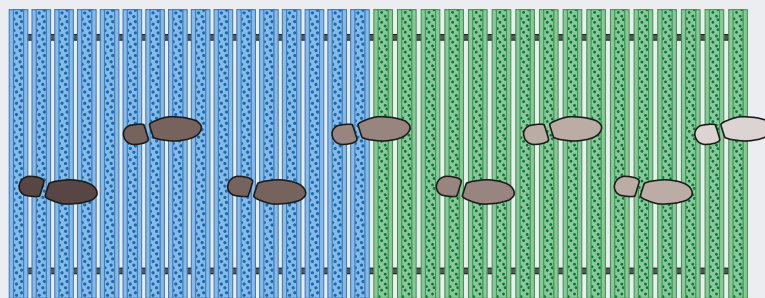
WHY PROPER PLANNING IS CRITICAL:

An entrance mat can only function as a dirt trap when it is planned properly beforehand. A person should take at least 4 steps on the mat to collect 80% of the dirt or moisture from the soles of his/her shoes.

PLANNING PROPOSAL:

Coarse cleaner

Fine cleaner



at least 4 steps

at least 4 steps

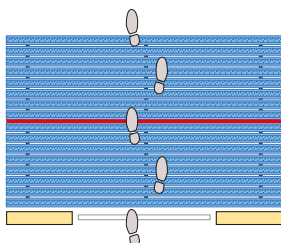
The ideal plan looks like this:

First lay a coarse cleaner at least 2.00 m long, then a fine cleaner at least 2.00 m long. The mat should be laid in a frame and flush with the floor. Take potential expansion into account whenever the mat is exposed to the sun.

Our consultants based in the back-office or in the field all have a high level of expertise. Please don't hesitate to take advantage of our free consultation service.

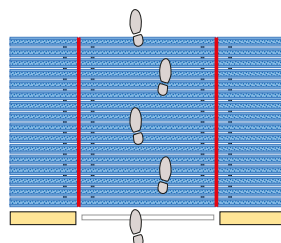
EXAMPLES OF CORRECT AND INCORRECT PARTITIONS:

Partition according to the walking depth:

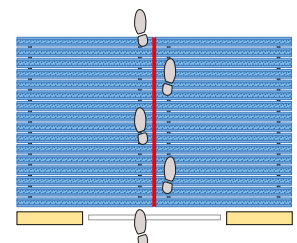


Correct

Partition according to the profile length:



Correct



Incorrect!



The HAGOMAT sample folder:

Besides the brochure, it also contains the patterns of the best-selling types. An invaluable aid for architects and skilled craftsmen when selecting a mat!



The HAGOMAT display stand:

To display 6 mats in the 60×40 cm and 80×50 cm standard sizes. The bottom compartments provide space for additional mats.



Pictured above: Hagomat Combistrip Brush at OMV headquarters

Pictured below: Hagomat Exclusive at the Wien Energie customer service centre

Pictured right: Hagomat CombiClean at the SPAR shopping centre



Other products from the HAGO product line:



HAGO

TECHNICAL BUILDING PRODUCTS

Main office:

HAGO Bautechnik GmbH

A-4600 Wels, Traktstraße 19, AUSTRIA

Phone +43 7242 / **66 3 41-0**

Fax +43 7242 / **66 3 41-23**

e-mail: office@hago.at

www.hago.at