



Load capacity: 15 kN test load EN 124

Material: Frame, Plate and cross-beam made of steel galvanized steel or stainless steel grade SS 304 (on request grade SS 316 also available). Reinforcement made of galvanized steel or stainless steel. Good chemical resistant seal.

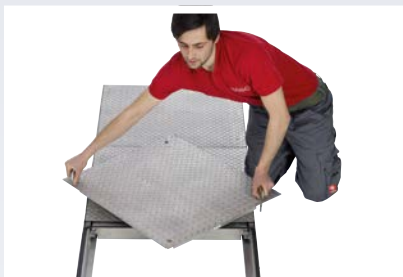
Features: RV(E)-RA in largely sealed design (construction similar to RVA): The frames are connected with cross-beams elements in the longitudinal direction. For larger covers (from a length of approx. 3 m) the HAGO multi access cover is delivered disassembled and again assembled on site. Not guaranteed to be completely watertight

The Lift-Off opening system: Every HAGODECK Type RV(E)-RA cover comes with a set of lifting keys and precise installation instructions.

Applications: RV(E)-RA multipart access cover is the ideal cover for supply and disposal channels.

Installation: Installation must be carried out according to our instructions.

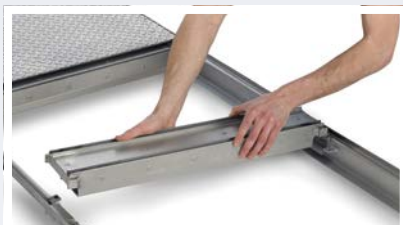
Specification clause: www.hago.at



RVE-RA

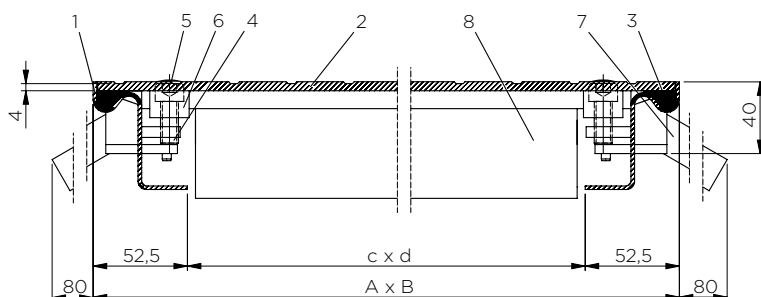


removed cover



removable cross-beam

RV-RA steel/ RVE-RA stainless steel



- | | | |
|----------------|---------------|------------------------|
| 1 Frame | 4 allen screw | 7 Anchor |
| 2 Durbar-plate | 5 plastic cap | 8 removable cross-beam |
| 3 Seal | 6 sleeve | |